

Playing a flash movie

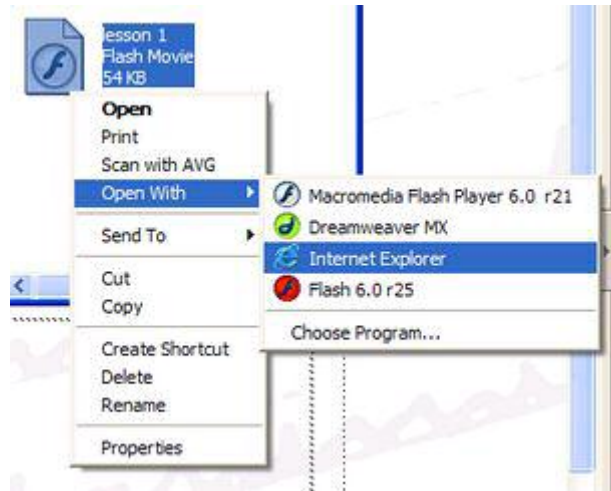
First, download the flash movie so that a copy is saved on the hard drive of your computer. Right-click on the text under the flash file's image. Choose **Save target as...** from the menu (Internet Explorer) or **Save link as...** (Firefox). Choose the location and name for the .swf file in the dialog that appears.

To play your movie, you could...

Double-click on the movie file. If you are lucky, the movie will automatically play in your web browser.

Or... right-click on the movie file and select **Open With** and then **Internet Explorer** or whatever browser you normally use.

You can combine both methods by selecting **Choose Program...** instead of the browser. Select your favourite browser from the list that pops up and then select the option to always use it for this type of file. This means that you can double click on flash movies in future and they will always open up in the browser.



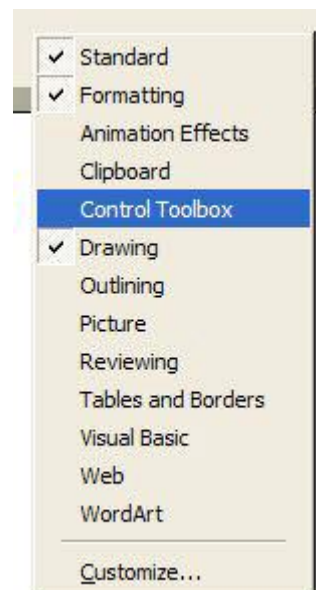
Alternatively, you could insert the movie into a PowerPoint slide. This means that the movie can be a part of a slideshow that brings together a variety of other objects such as images, text, movies and sounds.

Start a new PowerPoint presentation.

Create a blank slide.

Open the **Control Toolbox** by right-clicking on the grey toolbar area and selecting it from the menu that appears.

Click on the **More Controls** button on the toolbox and then scroll down the menu that appears until you find **Shockwave Flash Object**. Click on this and the mouse pointer will become a cross hair.



Drag a box out on the slide, this is where the movie will be played.

Right-click on the box that you drew out and select **Properties** from the menu that appears.

Set the **EmbedMovie** property to **True**. This means that once you have run the slideshow once and then saved the movie, it will be a permanent part of the PowerPoint file.

Set the **Playing** property to true so the movie plays as soon as the slide is viewed.



Enter the full path to the movie in the **Movie** property. The best way to do this is to run the movie in the browser and then highlight and copy the path from its address bar at the top. It can then be pasted into the property page.

Run the slideshow and then save the file.

